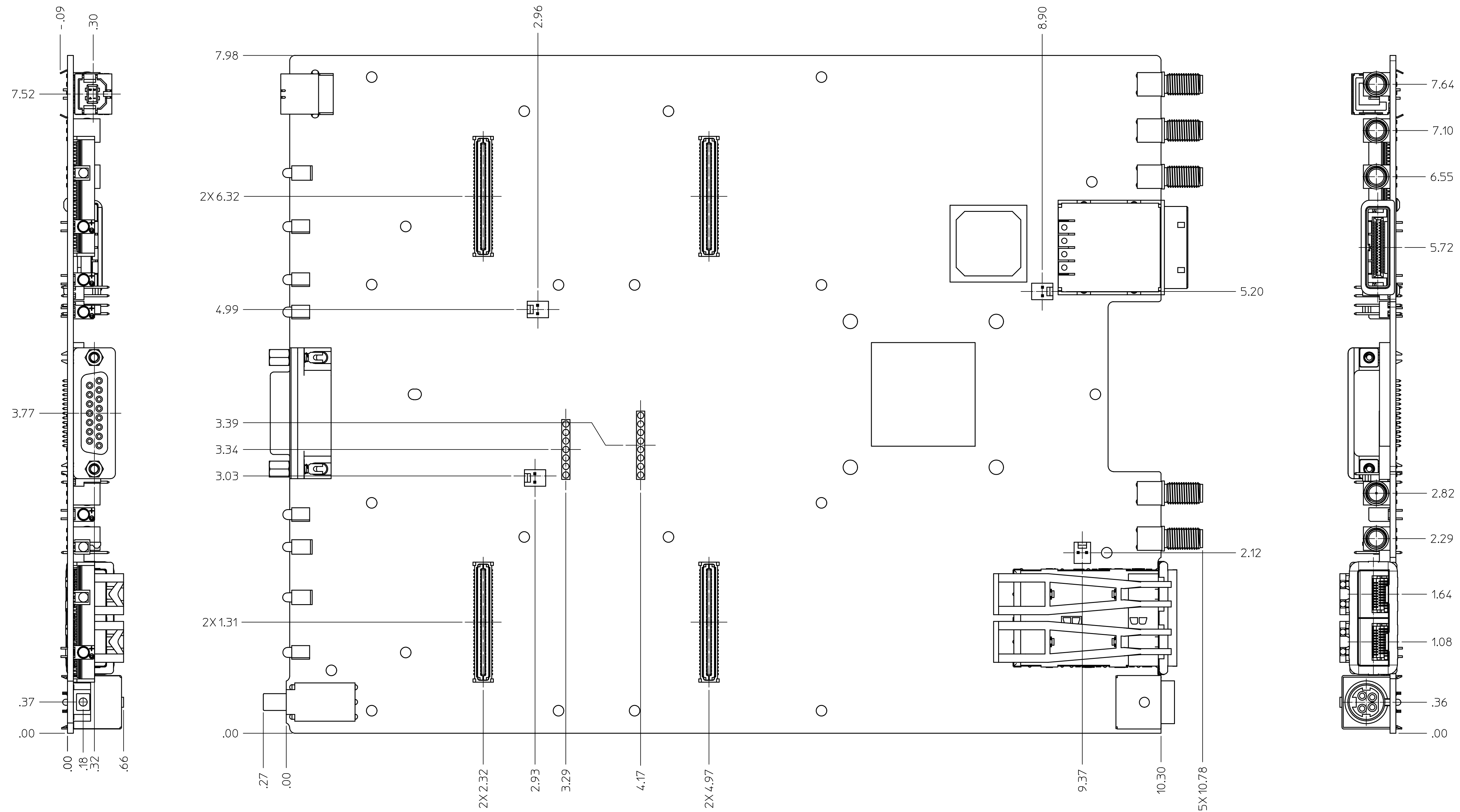


This document contains confidential and proprietary information which is the property of National Instruments Corporation. This proprietary information is supplied to the possessor pursuant to the possessor's agreement to do the following:

1. to maintain this document in confidence,
2. not to reproduce, publish or copy it in whole or in part without written permission, and
3. not to use this document as a basis for the manufacture or sale of goods without written permission.

© COPYRIGHT 2014  
NATIONAL INSTRUMENTS CORPORATION. ALL RIGHTS RESERVED.



1. REFER TO PRODUCT MANUAL ON NI.COM FOR MORE DETAILS.

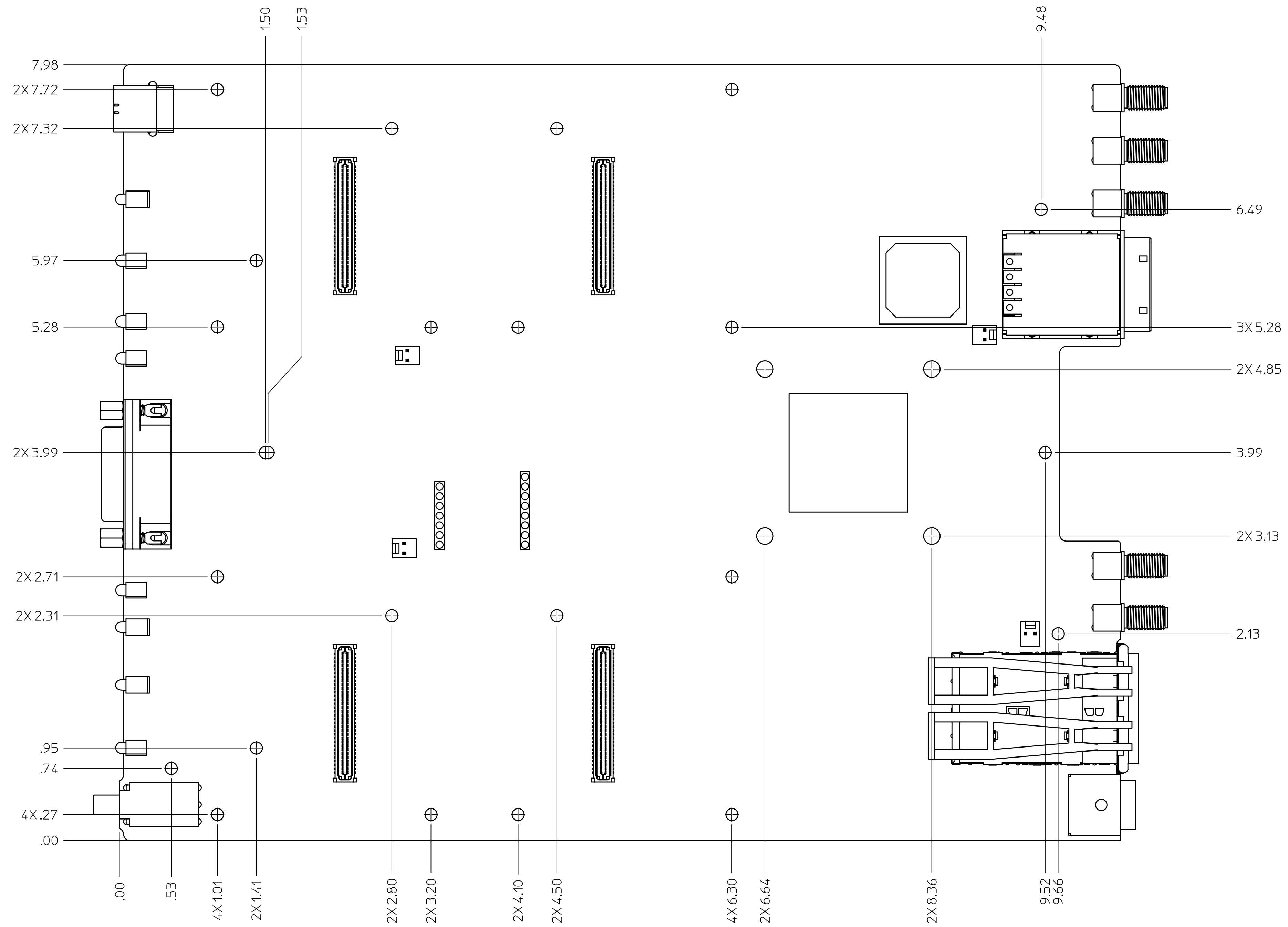
NOTES: UNLESS OTHERWISE SPECIFIED.

|  |  |              |
|--|--|--------------|
| UNLESS OTHERWISE SPECIFIED<br>DIMENSIONS ARE IN INCHES | NATIONAL INSTRUMENTS®<br>AUSTIN, TEXAS               |              |
|  | TITLE<br>CCA, ETTUS X3XX, MOTHERBOARD                |              |
| DO NOT SCALE DRAWING<br>THIRD ANGLE PROJECTION         | SIZE CODE IDENT NO. MM/DD/YYYY<br>D 7U296 12/16/2014 | REV<br>1     |
|  | SCALE: 1.5:1   | SHEET 1 OF 2 |

This document contains confidential and proprietary information which is the property of National Instruments Corporation. This proprietary information is supplied to the possessor pursuant to the possessor's agreement to do the following:

1. to maintain this document in confidence,
2. not to reproduce, publish or copy it in whole or in part without written permission, and
3. not to use this document as a basis for the manufacture or sale of goods without written permission.

© COPYRIGHT 2014  
NATIONAL INSTRUMENTS CORPORATION. ALL RIGHTS RESERVED.



|              |       |                         |              |     |
|--------------|-------|-------------------------|--------------|-----|
| SIZE         | CODE  | IDENT NO.               | DRAWING NO.  | REV |
| D            | 7U296 | cu_X3XX_motherboard_ccd | 1            | 1   |
| SCALE: 1.5:1 |       |                         | SHEET 2 OF 2 |     |